

**Sunken Kai Anela (Maui Snorkel Charters), on coral reef, Molokini, Maui—2006**



**Molokini Marine Life Conservation District, Maui**

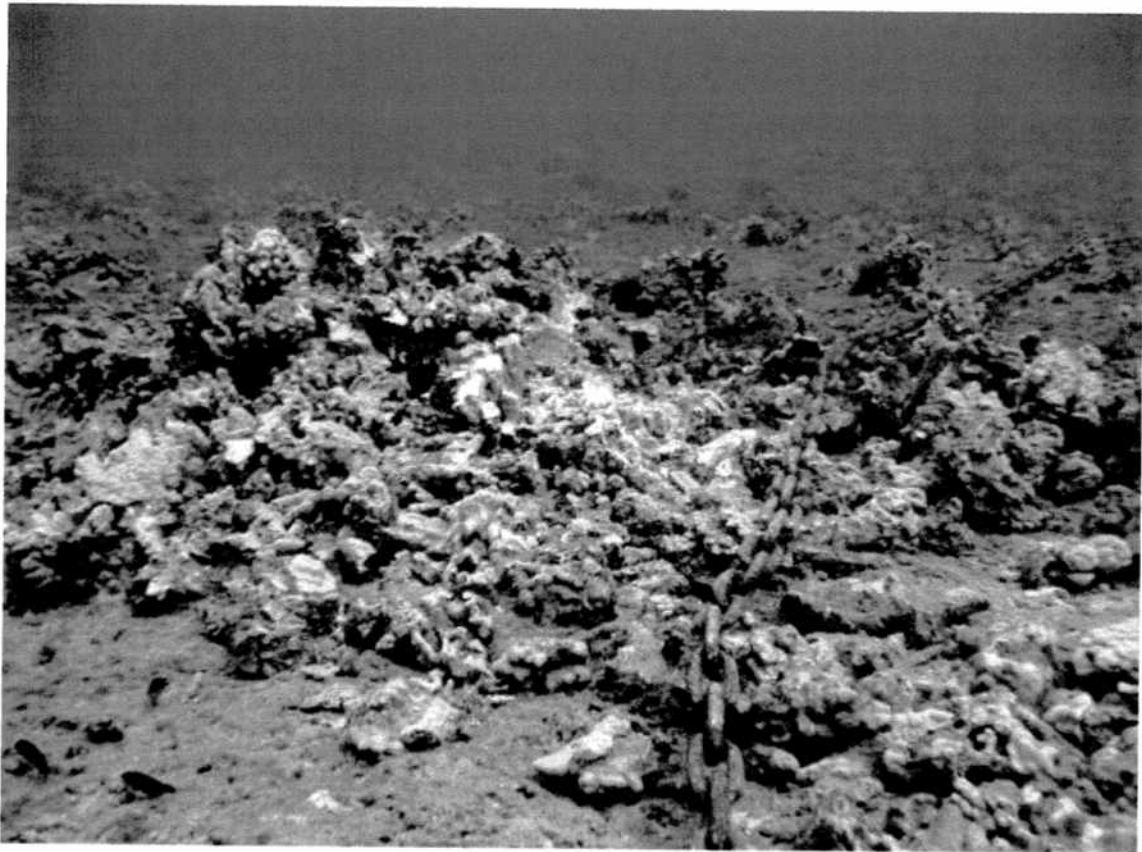
**Area Impacted: 192 square meters**

**Specimens Damaged: 661**

**Status of Case: Case settled for \$396,915—September 2008**



**Kai Kanani**



**Alleged Anchor Chain Impacting Coral Reef Habitat—August 2007**

**Area Allegedly Impacted: 910.4 square meters**

**Specimens Allegedly Damaged: 538**

**Board Finding: \$542,950.49 in administrative fines, fees, and costs—October 2008**

**Status of Case: Party has requested contested case hearing**